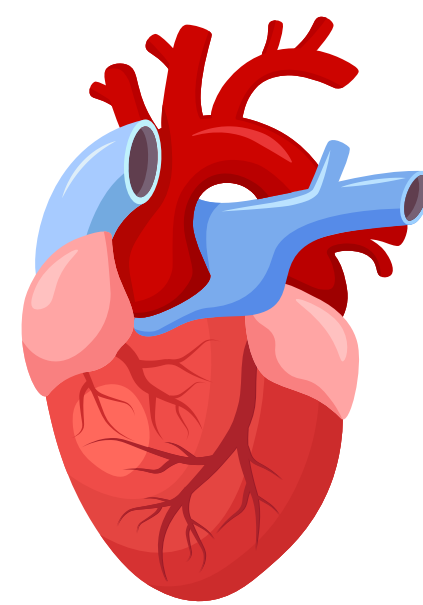


COMMON ARRHYTHMIAS SUMMARY SHEET



NORMAL SINUS RHYTHM



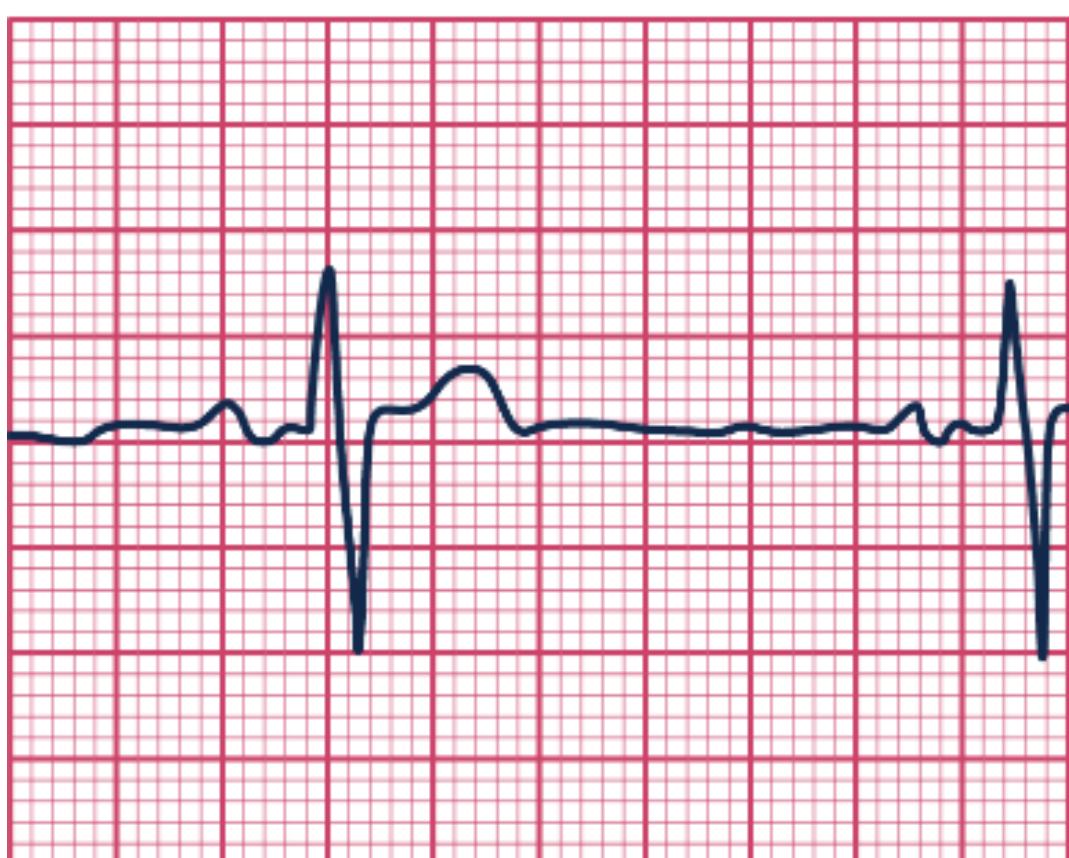
CHARACTERSTICS

- Heart rate of 60-100 bpm
- Regular atrial and ventricular rhythms
- Normal P wave
- Normal QRS complex
- Normal PR interval

TREATMENTS

- Regular rhythm
- No treatment

SINUS BRADYCARDIA



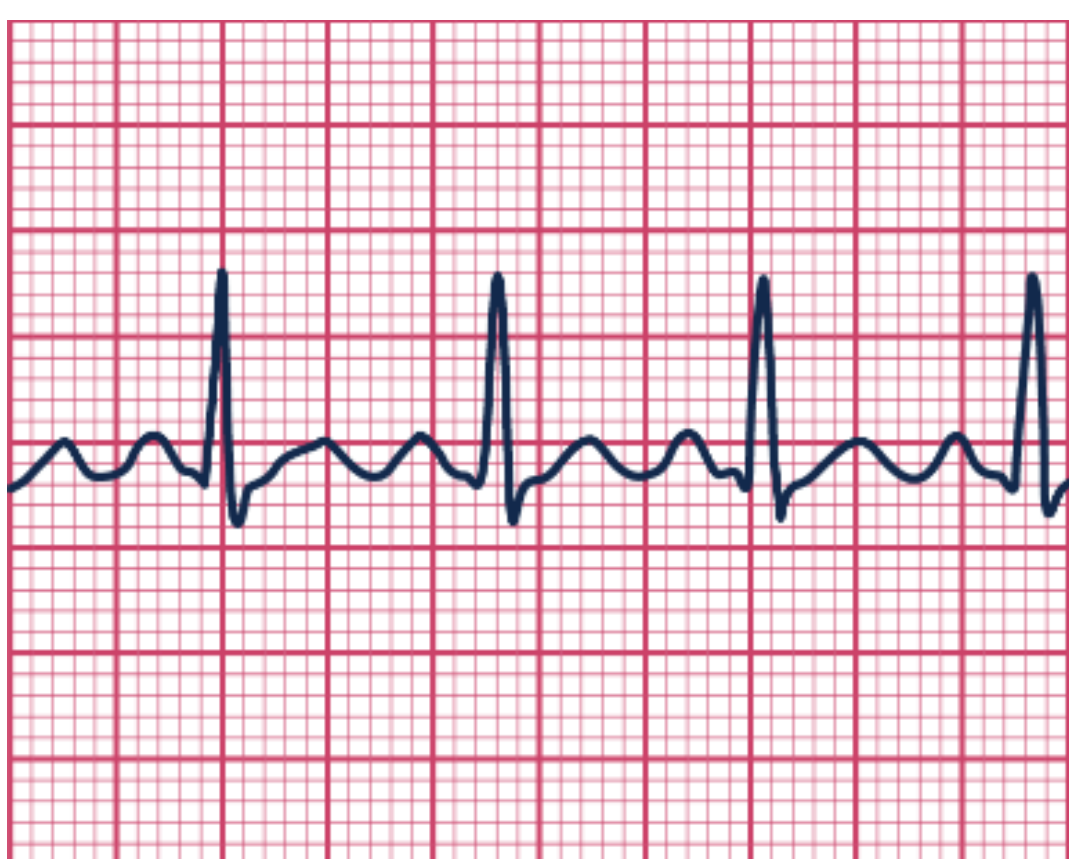
CHARACTERSTICS

- Heart rate < 60 bpm
- Regular atrial and ventricular rhythms
- Normal P wave
- Normal QRS complex
- Normal PR interval

TREATMENTS

- Atropine
- Epinephrine
- Permanent pacemaker
- Transcutaneous pacing

SINUS TACHYCARDIA



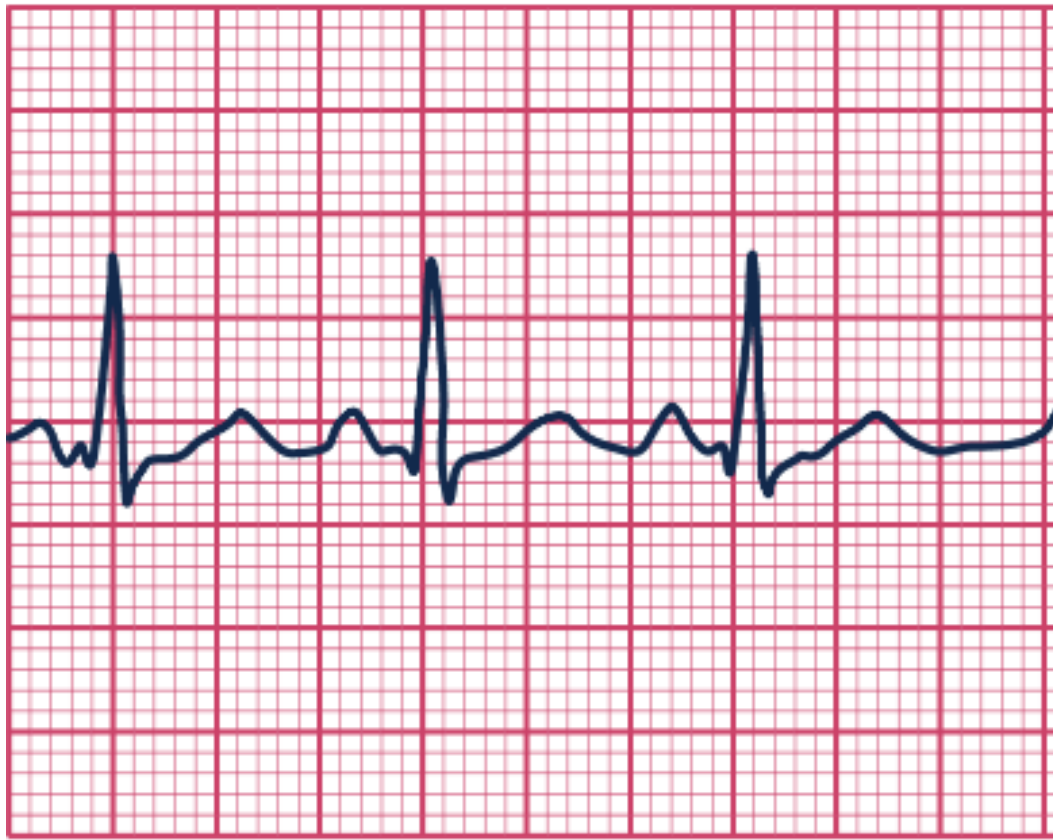
CHARACTERSTICS

- Heart rate >100 bpm
- Regular atrial and ventricular rhythms
- Normal P wave
- Normal QRS complex
- Normal PR interval

TREATMENTS

- Adenosine
- Beta-Blockers
- Calcium-Channel Blockers
- Vagal maneuvers
- Treat cause

SINUS ARRHYTHMIA



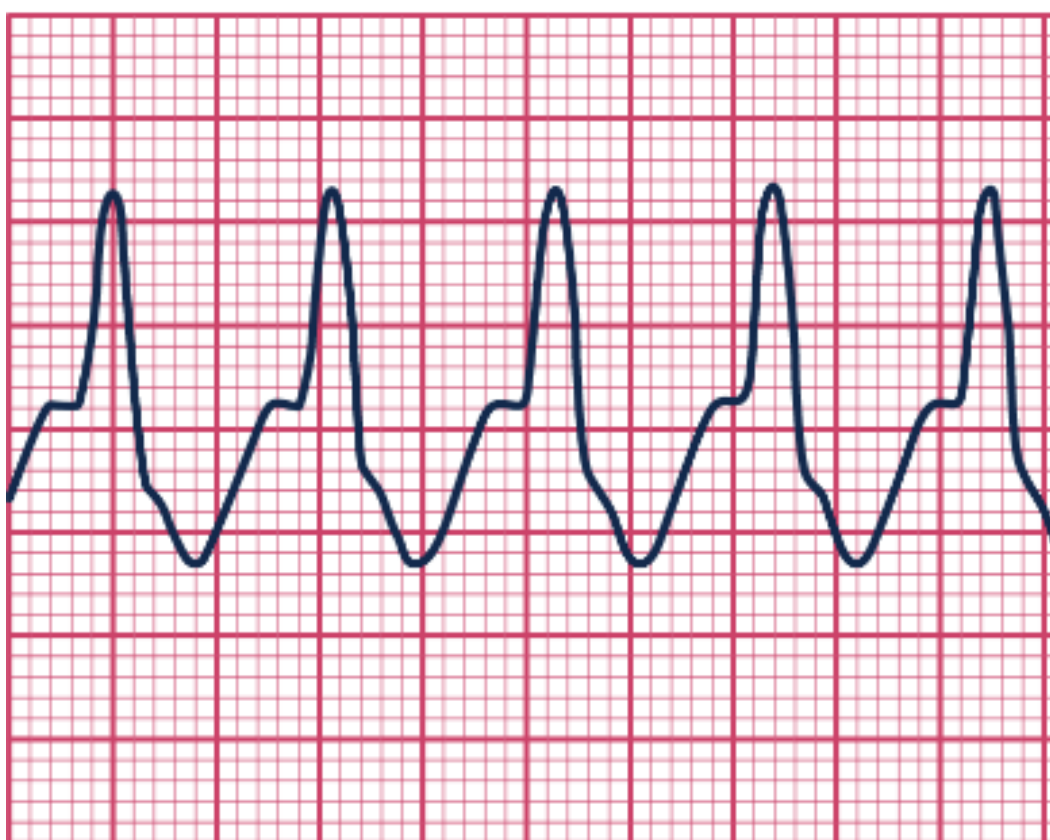
CHARACTERISTICS

- Heart rate 60–100 bpm
- Typically asymptomatic

TREATMENTS

- Avoiding stimulants and caffeine

VENTRICULAR TACHYCARDIA



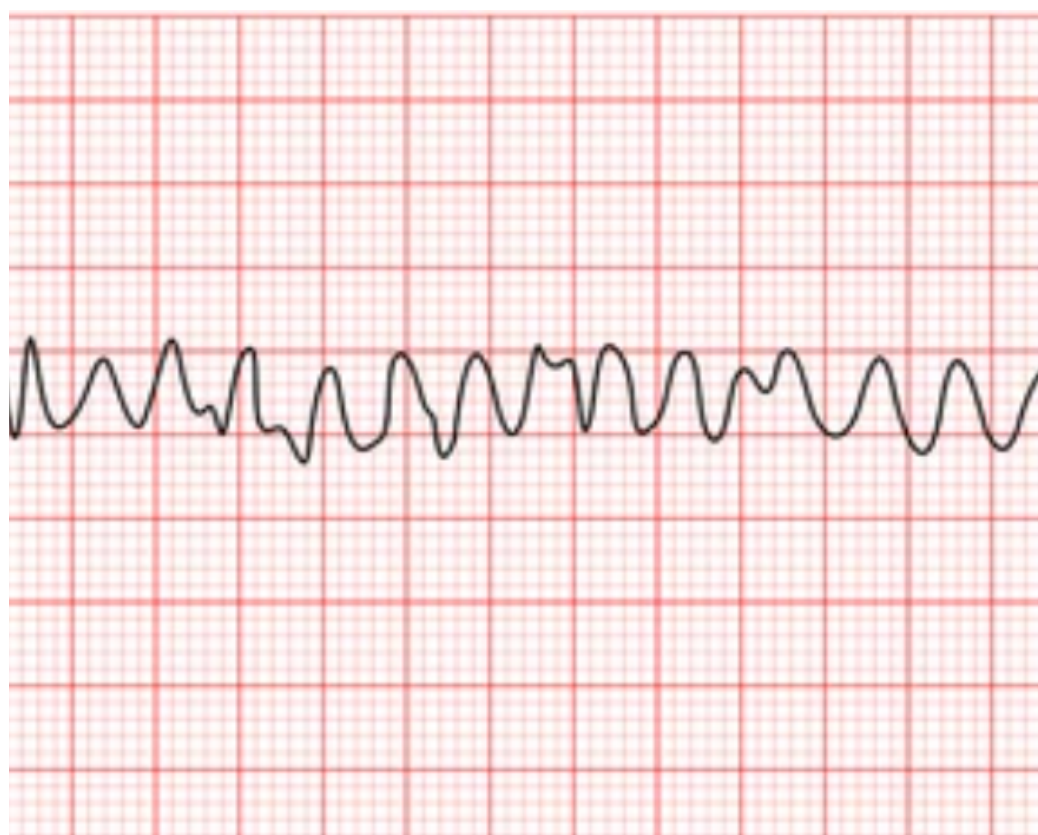
CHARACTERISTIC

- Heart rate 150–250 bpm, regular or irregular
- P wave not typically visible
- QRS complex are wide and distorted
- PR interval not measurable

TREATMENTS

- Amiodarone
- Cardioversion (with a pulse)
- Defibrillation (without a pulse)
- Treat cause

VENTRICULAR FIBRILLATION



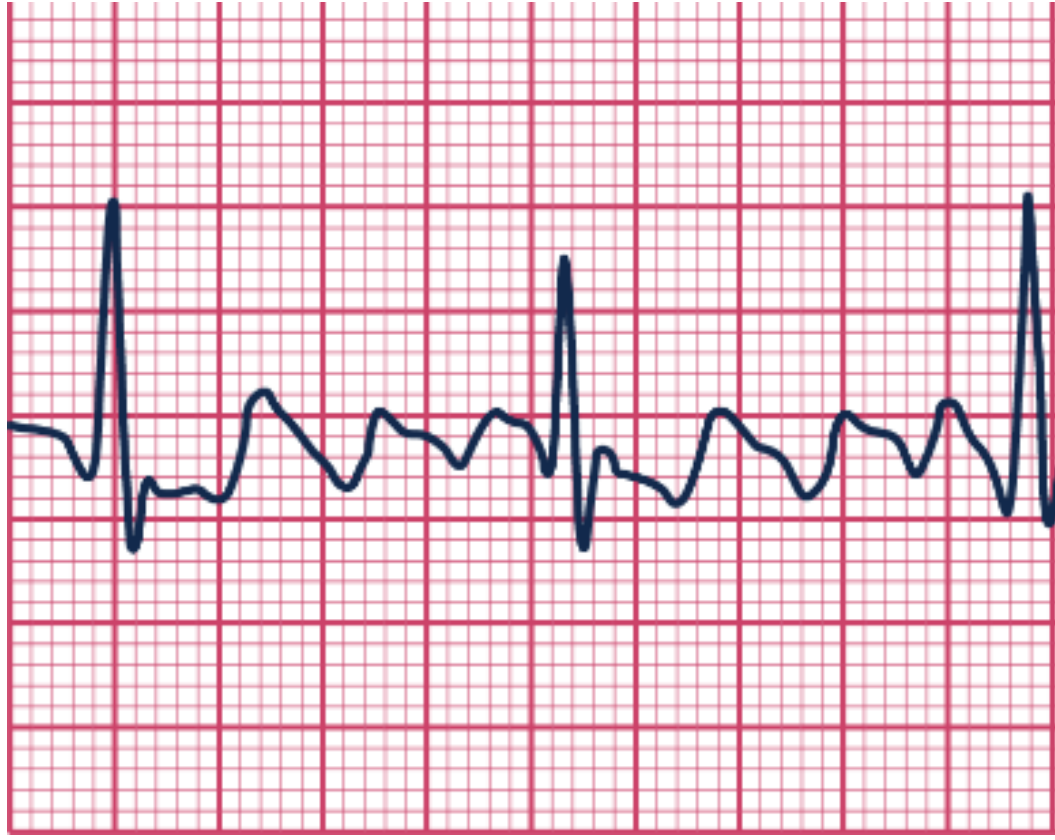
CHARACTERISTICS

- Heart rate not measurable
- Rhythm irregular and chaotic
- P wave not visible
- QRS complex not measurable
- PR interval not measurable

TREATMENTS

- Immediate initiation of CPR and ACLs
- Defibrillation
- Epinephrine
- Vasopressin

ATRIAL FLUTTER



CHARACTERISTICS

- Atrial rate 200–350 bpm, regular
- P waves have a sawtooth pattern
- QRS complex- typically normal
- PR interval is variable and not measurable

TREATMENTS

- Beta-Blockers
- Calcium-Channel Blocker
- Electrical cardioversion

ATRIAL FIBRILLATION



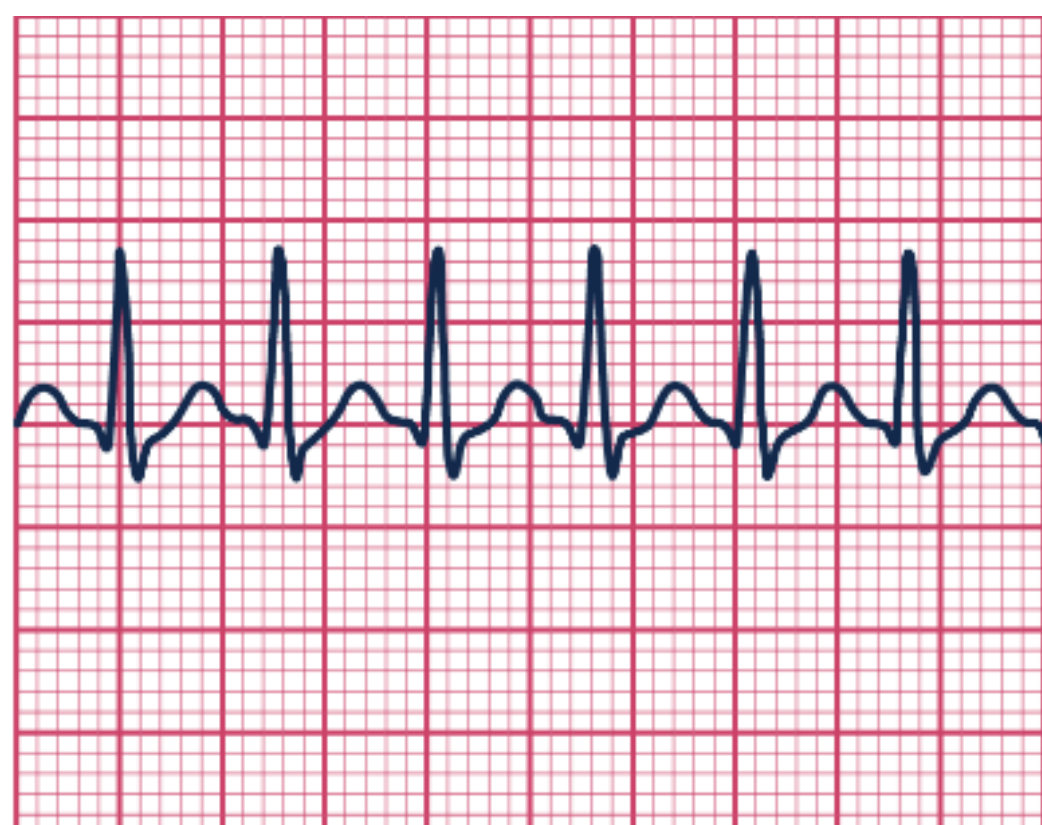
CHARACTERISTICS

- Atrial rate can be as high as 350–600 bpm, and irregular
- P waves are chaotic, fibrillatory
- QRS complex has normal shape and duration
- PR interval not measurable

TREATMENTS

- Anti-dysrhythmics
- Beta-Blockers
- Calcium channel blockers
- Electrical cardioversion with anticoagulants

SUPRA-VENTRICULAR TACHYCARDIA



CHARACTERISTICS

- Heart rate 150–220 bpm
- P waves abnormal, may be hidden by T wave
- Normal or shortened QRS complex
- Normal PR interval

TREATMENTS

- Adenosine
- Catheter ablation
- Calcium channel blockers
- Cardioversion (if client is unstable)
- Vasovagal maneuvers